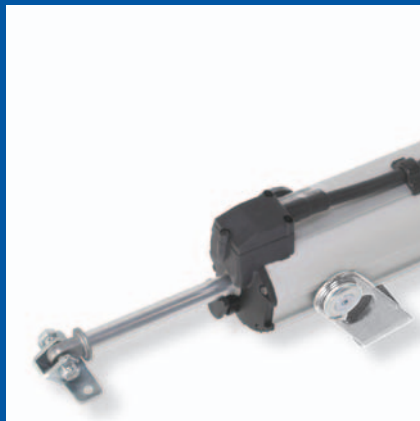
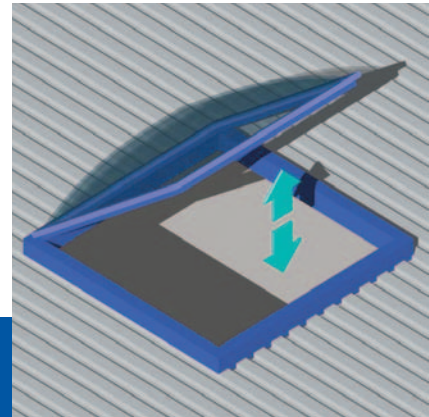
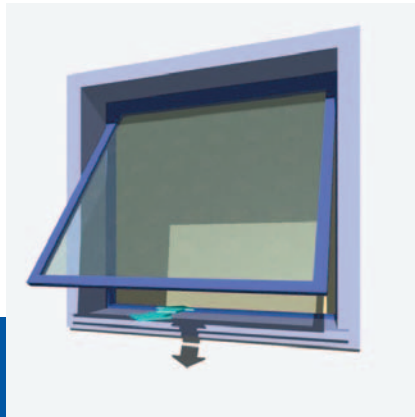


# [Linea D8 Fce] ..... **MINGARDI**<sup>®</sup> THE REFERENCE FOR WINDOW AUTOMATION

**Vérin à tige pour:**  
fenêtres en saillie, coupoles,  
pales brise-soleil, fenêtres à  
lamelles.

**Rod actuator for:**  
top hinged windows, domes,  
sunshades, louvre windows

## 500N



Bride coulissante tout le long de l'axe du vérin  
*Fixing bracket sliding along the whole body*

Degré de protection élevé  
*High protection degree*

Absence d'entretien  
*Maintenance free*

Degré de protection: IP 55 / *Protection degree: IP 55*

Fin de course fermeture-ouverture: Microcontact / *Limit switch closing-opening: Microswitch*

Coloris: Anodisé Argent / *Colour: Anodised Silver*

### DONNEES TECHNIQUES D8 Fce / TECHNICAL FEATURES D8 Fce

CODE CODE	DESCRIPTION DESCRIPTION	TENSION D'ALIMENTATION VOLTAGE	FORCE DE POUSSEE FORCE DE TRACTION THRUST TENSILE	COURSE STROKE	ABSORPTION MAXI CONSUMPTION MAX	VITESSE MINI SPEED MIN.
2700207	D8 160 mm	230 V~ / 50 Hz	500 N	160 mm	175 W	ca. 19 mm/s
2700292	D8 200 mm	230 V~ / 50 Hz	500 N	200 mm	175 W	ca. 19 mm/s
2700365	D8 235 mm	230 V~ / 50 Hz	500 N	235 mm	175 W	ca. 19 mm/s
2700293	D8 300 mm	230 V~ / 50 Hz	500 N	300 mm	175 W	ca. 19 mm/s
2700297	D8 400 mm	230 V~ / 50 Hz	500 N	400 mm	175 W	ca. 19 mm/s

LES VALEURS DE PERFORMANCE REPORTEES SUR LE TABLEAU SONT VERIFIEES A UNE TEMPERATURE DE FONCTIONNEMENT DE -10°C/+40°C AVEC UNE HUMIDITE RELATIVE MAXIMALE DE 60%.  
THE VALUES INDICATED ON THE TABLE WERE RECORDED IN A CLIMATIC TEST CHAMBER AT OPERATING TEMPERATURES BETWEEN -10°C/+40°C WITH MAX 60% RELATIVE HUMIDITY.

